

# iSynergy

PREMIUM IN DESIGN + BUILD

## Who We Are

As part of the Trends Group Inc. (TGI), Interior Synergy Solutions, Inc. (iSynergy) provides both local and multinational corporations with large-scale, end-to-end, and tailor-fit design and build services including conceptualization, construction, and Information and Communications Technology (ICT) integration.

## Offerings

- Workplace Design
- Fit-out
- Project Management
- Turn-Key (One of the only ones in the country inclusive of Information and Communications Technology (ICT))
- MEPFS (Mechanical, Electrical, Plumbing, Fire, Structural)



## Vision

We aspire to be the trusted and leading commercial design and build firm in the region.

## Mission

Driven by our core values, we deliver quality, innovative, end-to-end, and technology-integrated design and build services to provide long-term and sustainable value to our stakeholders.

## Quality, Innovative Design and Construction from Industry Experts

Through the expertise of our architects, interior designers, engineers, and industry leaders, we continually expand our prolific portfolio with multiple completed commercial fit-outs.

## Productivity through Tech-Savvy Workspaces

We foster a team-driven culture through technology-integrated workspaces and collaborative environments.



# Our Offices Nationwide

## Manila

21/F Trafalgar Plaza, 105 H.V. Dela Costa Street  
Salcedo Village, Makati City 1227

## Clark

Unit 115 & 116 Clark Welcome Center Suites  
Berthaphil VII Compound, SCTEX Road, Clark Freeport  
Zone, Pampanga

## Cebu

The Penthouse, Trends Plaza Building, F. Ramos  
Street, Cebu City 6000

## Davao

2/F Building I, ATU Plaza  
Governor V. Duterte St. Davao City 8000





## Trends

**Vision:**  
Design a work environment that fosters teamwork and collaboration, and challenges traditional office set up with modern aesthetics.

**Outcome:**  
Elevating the idea of Bürolandschaft, our team of experts developed an open office setup that promotes dynamic collaboration. The new environment's 1000-sqm facility boasts of an optimal mix of dedicated workstations with open spaces to reflect a thoughtful mix of function and style. Trends is also an exclusive partner of iSynergy for design and fit-out works which produced multiple completed sites in Cebu.

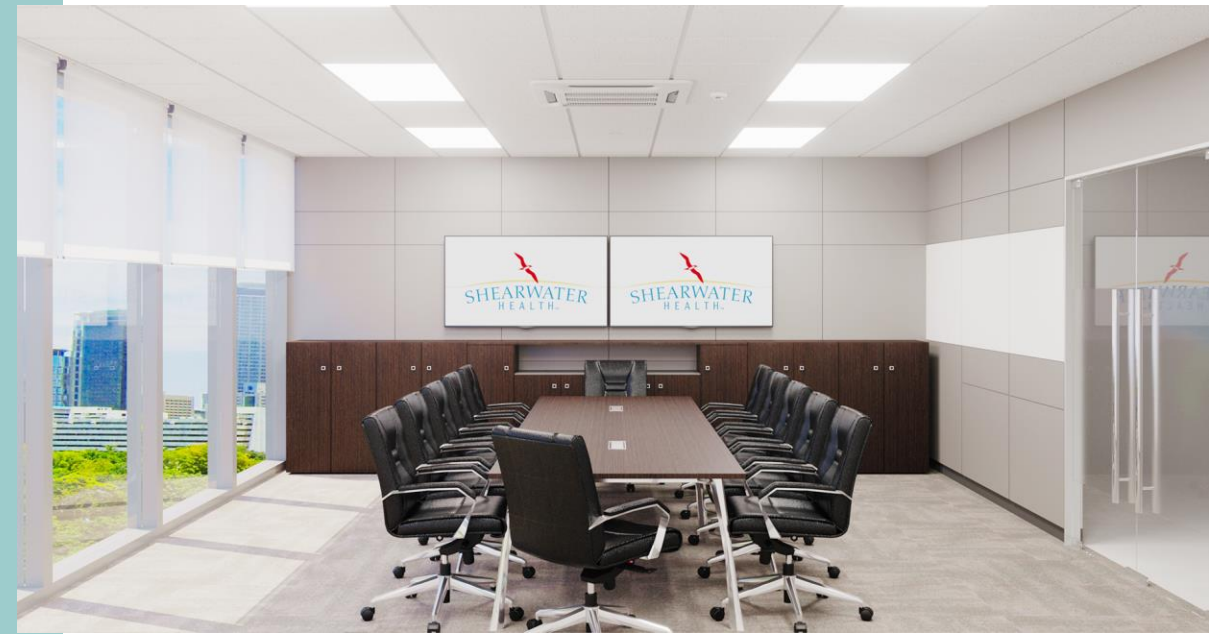




# Shearwater Health

**Vision:**  
Design a work environment with foundational requirements needed to achieve a high resilient network.

**Outcome:**  
Our team of experts provided their BGC office with floor fit-out, cablings, data center, network and wireless infrastructure with high availability and stacking features. With process improvements and space challenges in mind, our team also designed a 5000-sqm site in Cebu fully equipped with the technological infrastructure to supplement their clinical expertise.





## TOA Global

**Vision:**

Build a practical and collaborative work environment that challenges the standard office setup and provide next-level employee experience.

**Outcome:**

Not only did we fulfill their vision of building a modern work environment, we also set the design standard for TOA Global's future and international expansions. The pioneered design features a 2,500-sqm facility equipped with production seats, client suites, training and recreation rooms, all of which are designed to challenge the standard office setup in Clark, Pampanga.







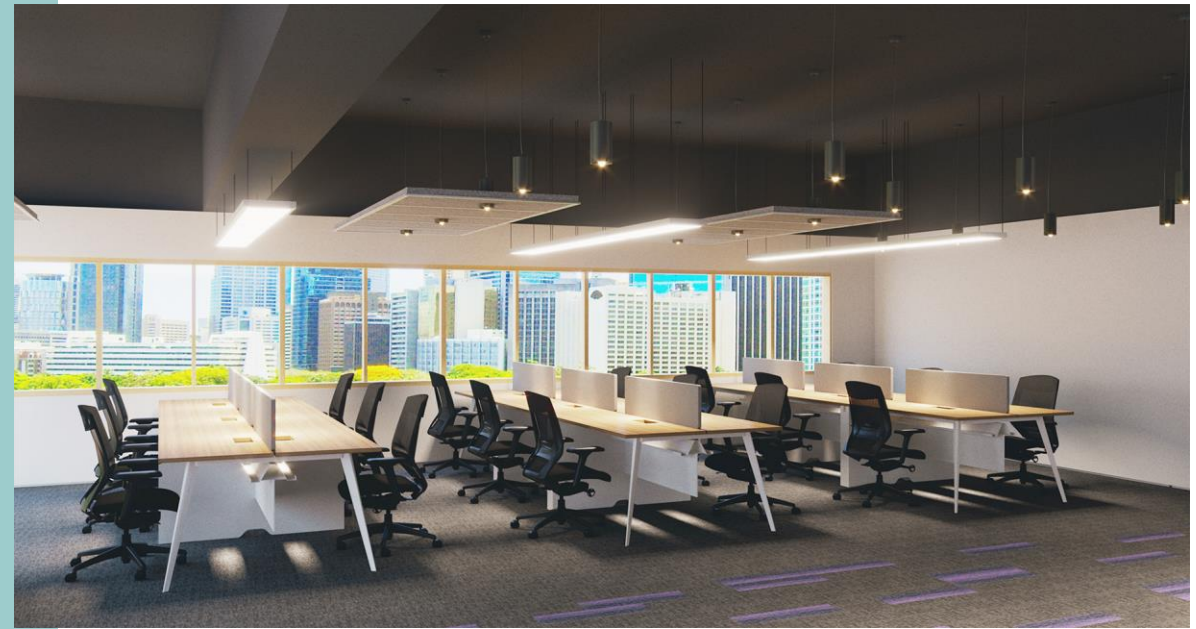
## Markem-Imaje

**Vision:**

Design the office of Markem-Imaje, a subsidiary of Fortune 500 company The Dover Group, to incorporate the company's technology and reflect its collaborative entrepreneurial spirit.

**Outcome:**

Implementing the principles of color and space, our design experts built a 400-sqm office that allows easy display of Markem-Imaje's technology. The established workspace mirrors the organization's collaborative entrepreneurial spirit through its thematic colors and open space layout. The finished design will also serve as the standard for their future sites.

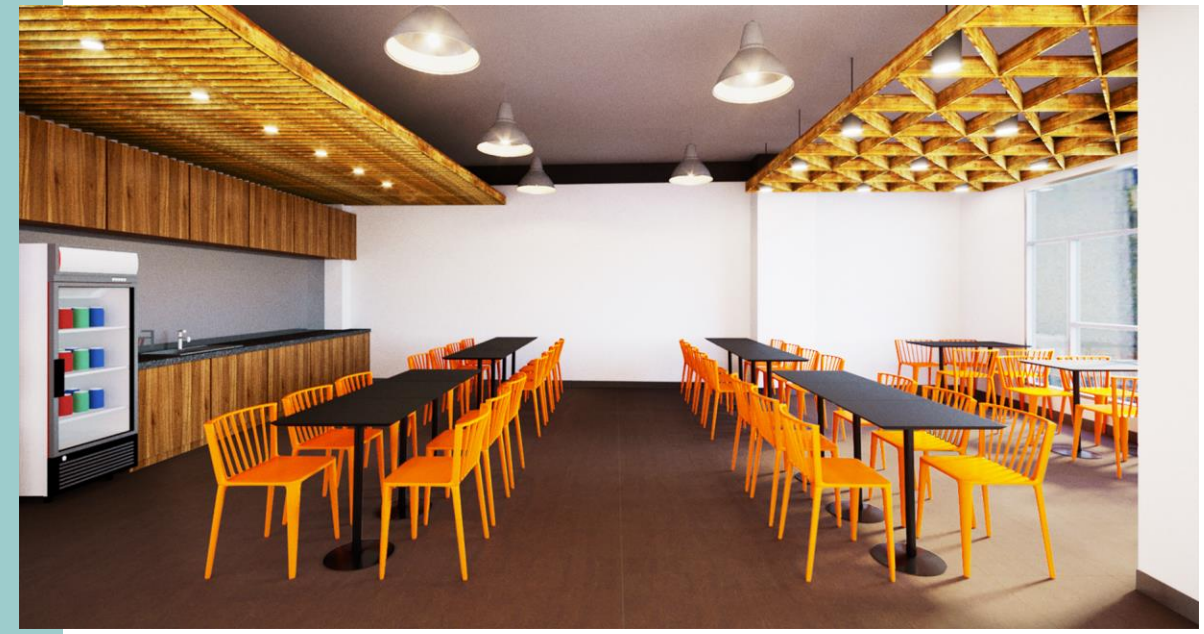




## Visaya KPO

**Vision:**  
Design a work environment that facilitates client engagement and reflects a results-oriented and agile workplace.

**Outcome:**  
The Visaya KPO offices in Makati and Dumaguete was built to make workplace agility a possibility. The two sites combined feature a total of 1,500-sqm and can accommodate more than 300 seats with production areas designed for an agile work environment. Through video-conferencing technology and touchdown stations, the reimagined workspace facilitates easier workflows and consequently provide smoother client engagements.





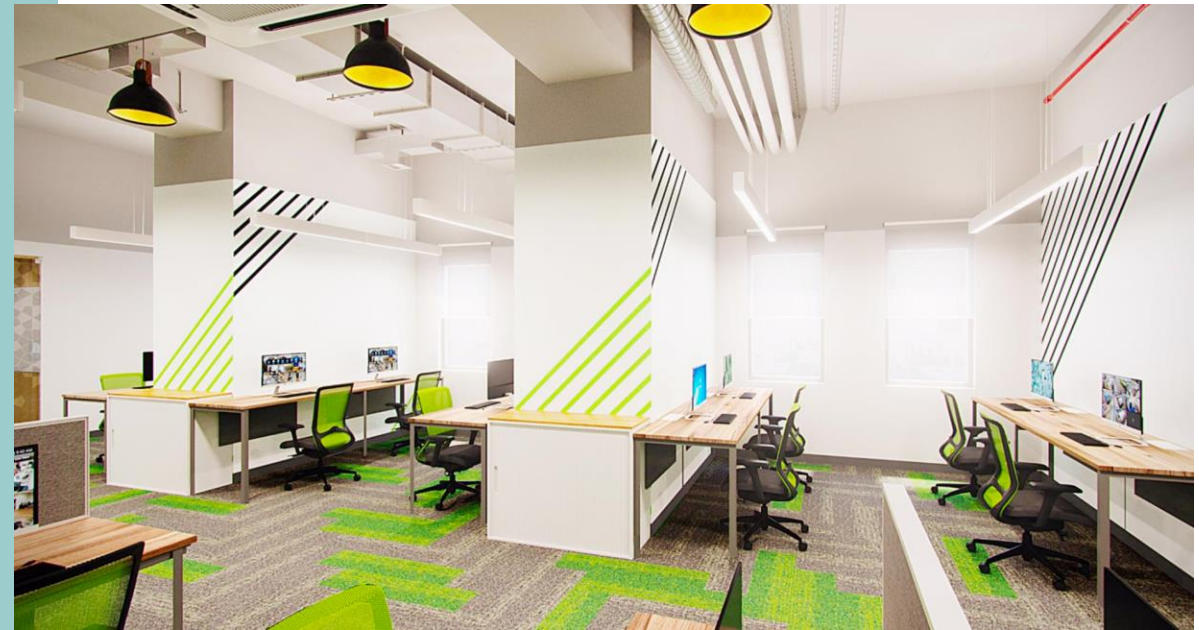
## Magenic

**Vision:**

Design the office expansion of Magenic, a repeat client of iSynergy. Our trusted partner envisions a work environment that facilitates smoother transactions and fosters dynamic collaboration.

**Outcome:**

Through dominant green themes and a masterful use of open space layout, our team built an office environment that fosters easy interaction of Magenic's employees and create more productive and collaborative workspaces.



# OUR CLIENTS

 amaysim Cognizant ePLDT Infosys® JETEX sitel PHILAM LIFE  
An AIA Group Company TRENDS® scJohnson  
A family company  
at work for a better world CGI DPC  
Directories Philippines Corporation  
THE Directory Company MEGAWORLD rare THOME  
GROUP social  
workplace Coca-Cola stefanini Canon

# OUR PROMISE

**Cutting-edge tailor-made solutions delivered on time and within budget**



# WE BUILD WHAT YOU IMAGINE

Contact us for technology-integrated fit out solutions.



(+632) 8811 8181



www.iSynergy.ph



info@isynergy.ph



@InteriorSynergyPH



iSynergyPH